



# Commencement '18

Sr. Speaker, Class President, ASB President, and Alma Mater Singer please see Ms. McCurry before we start!

*Shhhhhhhhh.....*

**Thank You**

# TAKING CARE OF BUSINESS



Google Accounts

## FAQ

### What is the purpose of this tutorial?

Here are the frequently asked questions regarding IUSD Google accounts.

---

#### 1: Do I have access to my Google account forever?

A: No, you will only have access to your Google account for as long as you are a student in the district.

---

#### 2: How much time do I have after Graduation to transfer my files?

A: To avoid any issues (like having your Google account suspended), we recommend that you transfer all of your files before the last day of August.

---

#### 3: How do I get all of my files off of my IUSD account?

A: You will need to share all of your files from your IUSD account with a personal gmail.

If you don't know how to share the files to your personal account, please follow the instructions in this [tutorial](#).

---

#### 4: What if I don't have enough storage on my personal account?

A: Your non-IUSD personal account comes with 15gb of storage for free. If you do not want to pay for more storage, we recommend that you try downloading all of your files to your computer or external hard drive.

*If you run out of storage and can't download it to your computer, please send in a help desk ticket (email [helpdesk@iusd.org](mailto:helpdesk@iusd.org)) and we can try to help you find an alternative.*

---

#### 5: How can I transfer my files if my Google account is suspended?

A: You will need to send in a help desk ticket (email [helpdesk@iusd.org](mailto:helpdesk@iusd.org)). We will reactivate your account for 48 hours.

---

This document was created for Irvine Unified School District by the Information Technology Department.

Author: Ed Tech

For technical assistance, please email [helpdesk@iusd.org](mailto:helpdesk@iusd.org)



*When will I get my cap &  
gown?*

**Tomorrow, Wednesday, 6/6**

**8:20 AM – 9:20 AM**

**Exchange your  
Sr Clearance Card  
for your cap, gown**

**No Signatures will be  
available tomorrow!!!**

*What if I already have a  
red cap & gown?*

**Wednesday, 6/6**

**8:20 AM - 9:20 AM**

**Exchange your  
Sr Clearance Card  
for privilege to walk in  
ceremony.**

*When & How Will I Know  
What My Room  
Assignment Will Be On  
the Day of Graduation?*

**Wednesday, 6/6**

**8:20 AM - 9:20 AM**

**Each student will be assigned to a specific room to check into.**

**Check the Room Assignment List that will be available for viewing on Wednesday in the gym when you pick up your cap and gown.**

*Where & When Will I Pick UP My  
Pre-ordered Persons with a  
Disablity (PWD) Seating &  
Parking Passes?*

**Wednesday, 6/6**

**8:20 AM - 9:20 AM**

**If you pre-ordered PWD  
seating and/or parking  
passes before the deadline,  
they will be included in your  
cap and gown packaging.**

*Is it too late to reserve  
Persons With a Disability  
seating & parking?*

**YES**



*How long will it take to  
get my cap & gown  
tomorrow?*

**About an hour.**

**Lines will be by last name –  
alpha.**

*What if I still need to purchase a cap, gown, and tassel?*

See the Josten's representative tomorrow. There will be a limited supply of cap, gown, and tassel packages on hand to purchase – **\$40.00/CASH ONLY.**

**Cap Only/\$12.00 CASH ONLY.**

**Tassel only/\$10.00 CASH ONLY.**

*When do I report for staging tomorrow, if I am a **senior singer or speaker**?*

**Meet at  
Irvine High Stadium  
Wednesday, June 6<sup>th</sup>  
at 11:30 AM**

**You will rehearse for about 45 minutes.  
Put on sunscreen!**

*Where & When do I  
arrive at WHS on  
Graduation Day?*

**Report to your WHS room  
assignments @**

**Thursday, June 7<sup>th</sup>**

**3 P.M. SHARP!**

*Take care of rest room  
needs before checking in.*

*What is my room assignment?*

**RM K108**

**Speakers,  
Alma Mater Singer**

**Then it's Room # by alpha  
A-Z in J or K Buildings**

*See room list will be posted near  
the cap/gown pick up area  
tomorrow.*

# Check in with your teacher

## Complete the South Coast Photographic Card

### Phonetic spelling of your name

You will carry this card to the stadium

Give this to Ms. Prudhomme or Ms. Sterner.

They will read your name.

## Memorize who your assigned room teacher is

You **MUST** walk and sit with the ASSIGNED HOME ROOM TEACHER. This teacher will be holding your diploma.

He/she will hand you your diploma when you return from the stage to your assigned seat.

*How will I get to the stadium?*

**You will arrive by bus.**

**You will need to arrange for transportation after the ceremony.**

# Commencement Dress Code

## **MEN:**

- ▶ **Dark, Dress Slacks**
- ▶ **Dress shirt with button down collar**
- ▶ **Tie**
- ▶ **No shorts, No jeans**

## **WOMEN:**

- ▶ **Dress, Skirt or Dress Pants & blouse/top**
- ▶ **No shorts, No jeans**
- ▶ **No halter or strapless tops**

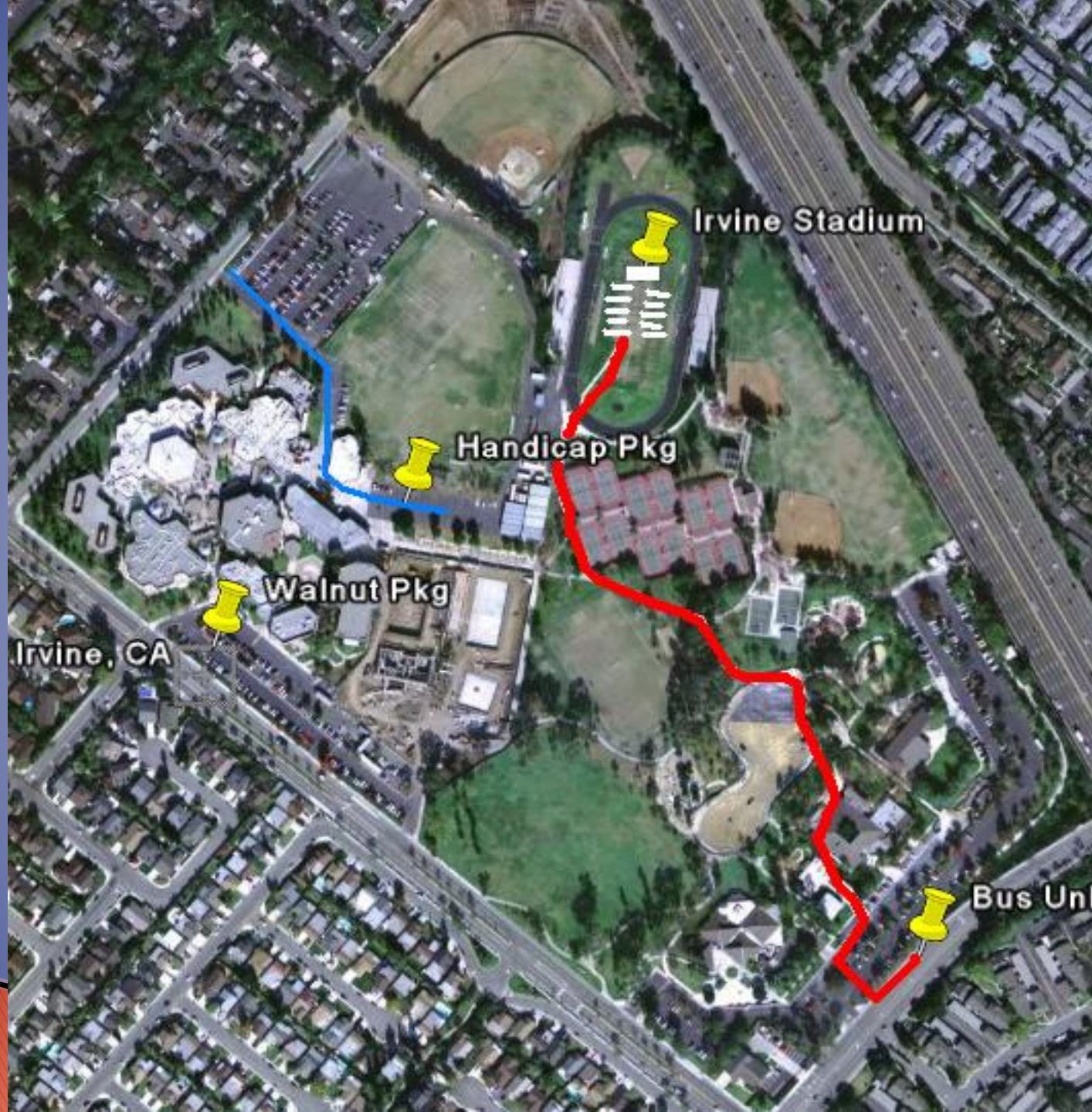


# *Walk-able, Dress Shoes*

**Prepare for walking a good distance and on the turf.**

**No running shoes, sneakers or flip flops.**





Irvine Stadium

Handicap Pkg

Walnut Pkg

Irvine, CA

Bus Unl

# *What do I bring?*

- ▶ **Cap & Gown & Tassel**
- ▶ **Honor cords and stoles, Sentinel medallions**
- ▶ **Orchid leis. No Novelty Leis**
- ▶ **Bobby pins, safety pins if needed**
- ▶ **Cell phones are okay, but must be turned **OFF** before and during ceremony. Stash your phone in your pocket when going up to the stage.**
- ▶ **NOTE: There are NO pockets in the commencement gowns. You may not hand-carry anything up to the stage except the issued 3x5 name card. Therefore choose one: a.) do not bring a cell phone, b.) keep the cell phone in a pocket underneath your commencement gown, or c.) make arrangements with a friend to hold your cell phone in his/her pocket underneath his/her commencement gown.**

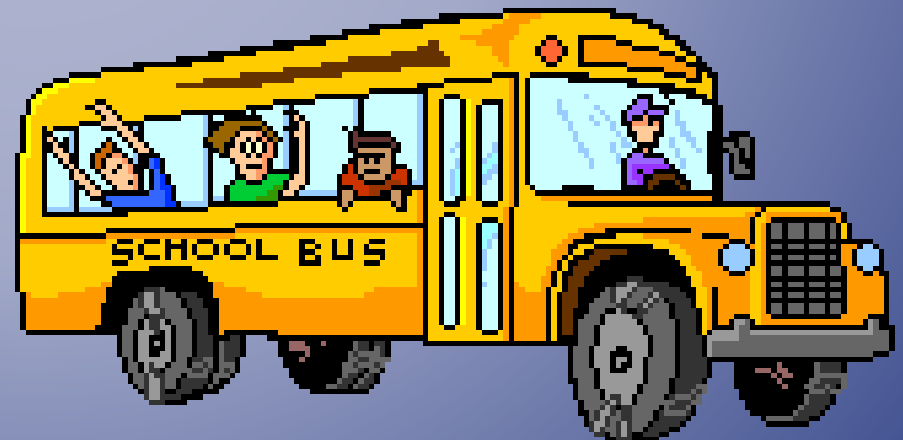
# *What NOT to bring?*

**No cameras, corsages, bouquets, toys, purses, water bottles, money leis, candy leis, etc...etc..etc...**



# PUT ON YOUR CAP & GOWN *in the room*

- ▶ **Tassel on the **Right**.**
- ▶ **Don't zip up yet – there will be a final check as you get on the bus.**
- ▶ **We will call your room # when it is time to load the buses.**



# Walk 2 X 2 as you enter the Stadium

**TURN CELL PHONES OFF ! ! ! ! /Keep in your pocket  
Walk behind your teacher**

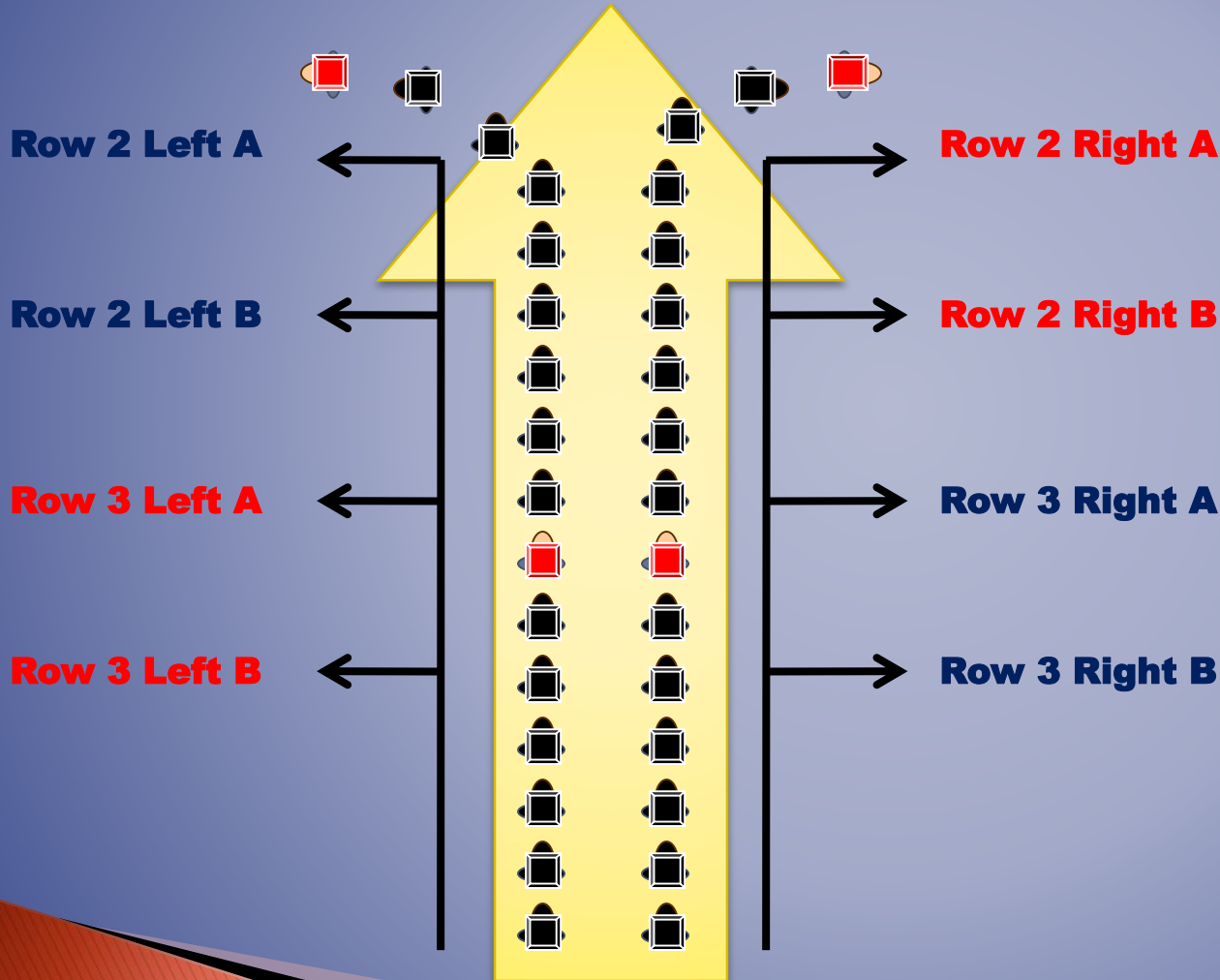
**Sit in your assigned row  
Singers should be seated  
next to the teacher so that  
you can exit row easily for  
the national anthem.**

**Remember:  
Your ASSIGNED HOME ROOM  
TEACHER will have YOUR DIPLOMA.**

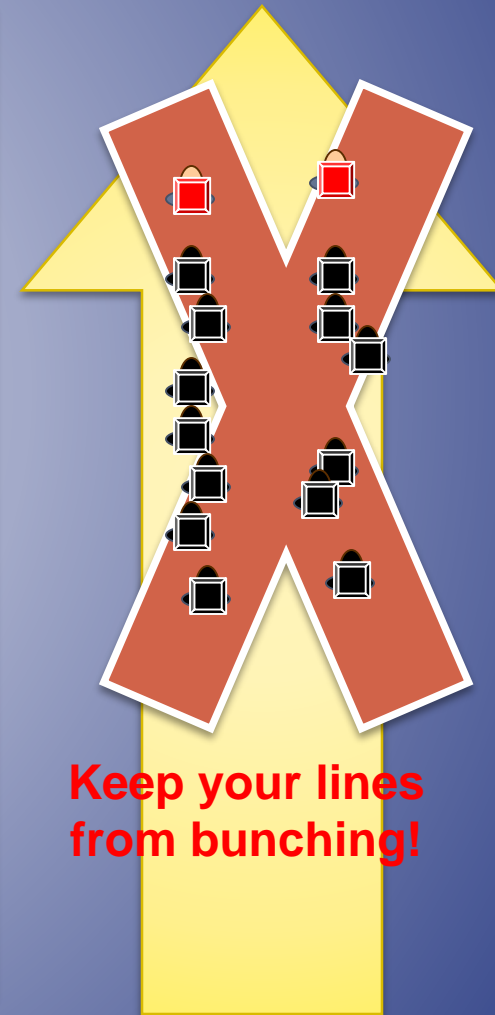


# Ceremony March

## Center Aisle



## Center Aisle



# *How do I know which row to sit in?*

**When you get off the bus, you will line up by ROOM # at the chalked area by tennis courts with your staff escort before you march on to field.**

**Your teacher/room # & students are PRE-ASSIGNED to a row.**

**Singers: sit in the same row/next to the teacher!**

**As you enter the seating row, walk all the way down the row (towards the bleachers side of your row). Take your seat immediately.**

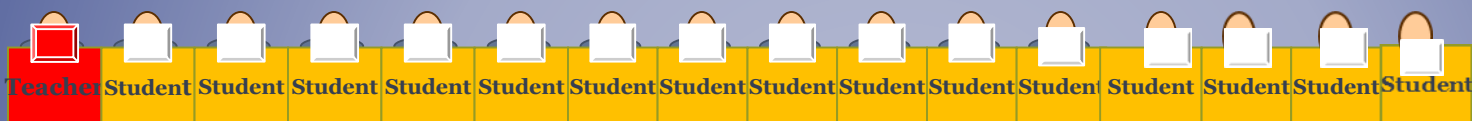
**After you sit down, if there is an empty chair or chairs, scoot over to keep empty chairs on inside of aisle.**



# REMEMBER...

**Each row has 2 sections.**

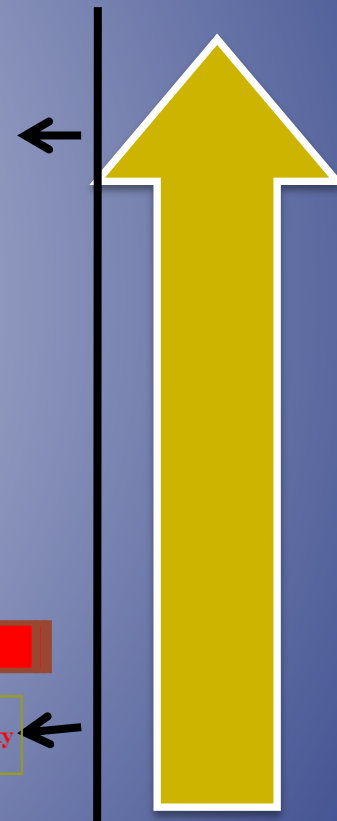
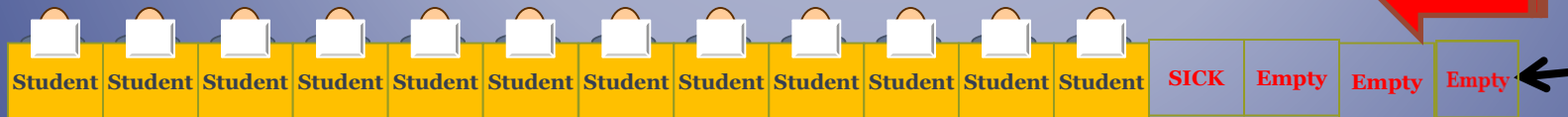
**Teacher + 15 students in Section A.**



**Next 9-16 students in Section B.**

**There will be at least one empty chair. Leave last chair empty. If**

**someone is missing...move down.**



# Ceremony Seating

**Center Aisle**

Each row has 2 sections. Teacher + 15 students in Section A

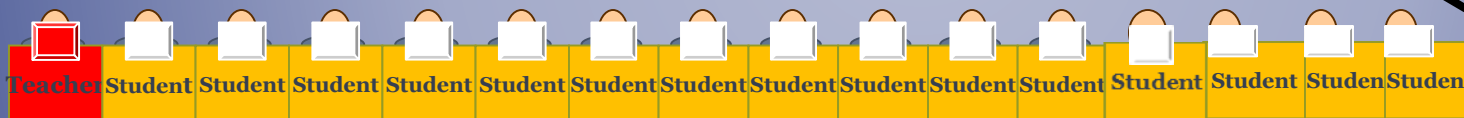


**Row 2 Left A**

Remaining HR students in section B (9 - 16).



**Row 2 Left B**



**Row 3 Left A**



**Row 3 Left B**

**Row 4 Left A**

# *How will I know when to go on the stage?*

**Counselors will usher you.**

- ▶ **Have your photo card with phonetic spelling ready.**
- ▶ **You will be greeted on stage by either Mr. Krebs or Ms. McCurry. You will be given a folder for your diploma.**
- ▶ **Your assigned teacher will pass out diplomas when you return to your assigned row seat.**

*How long will the ceremony last?*

**The ceremony will be about one hour in length.**

*Can I toss my cap?*

**Yes, but is doubtful that you'll get your own cap back. Take off your tassel before tossing the cap...if you want to keep your tassel!**

*Visitors will be invited to  
the field at the end of the  
ceremony.*



# REMINDER

**Tomorrow, Wednesday, 6/6  
9:00A.M.**

**Turn in your Sr. Clearance Card *In order to:***

- **Pick up your cap, gown, tassel and any Persons with a Disability seating passes/parking passes that you may have ordered.**
- **Check Room Assignment for graduation day**

*Stage Practice at the  
stadium*

**Wednesday, 6/6**

**11:30 AM – 12:30 PM**

★ **For** ★

**Sr Speaker, Class Pres,  
ASB Pres, Singers ONLY.**

***See you tomorrow  
at 9:00AM Sharp!***

***For the Sr. Clearance  
Card Turn-in and the  
Cap and Gown Pick up***



# Grad Night 2018

10:00pm June 7th (Graduation Day) – 5:00am June 8<sup>th</sup>

**CHECK-IN:** 10pm-11pm (no one will be admitted after 11pm)

**BRING:** No bags or backpacks unless *absolutely* necessary (bags brought will be searched)

No money or ID is needed (you will be issued a Grad Night photo ID and all activities are included)

You may bring personal items (keys, sweatshirts, wallets, chargers, etc.) as a bag check will be available

**WEAR:** Comfortable clothes, closed-toe flat shoes, sweatshirt or jacket

You can still buy a ticket (may not include personalized items). Pick up a form and get it in by **TOMORROW!** More Info: [WoodbridgeGradNight.org](http://WoodbridgeGradNight.org)

# Reminder

**Graduation Day is  
Thursday, 6/7 !**

**3 PM**

**Meet @ WHS**

*Missed Something?*

**This power point presentation  
will be available on the  
WHS website:**

**[www.woodbridgehigh.org](http://www.woodbridgehigh.org)**

THANK YOU!